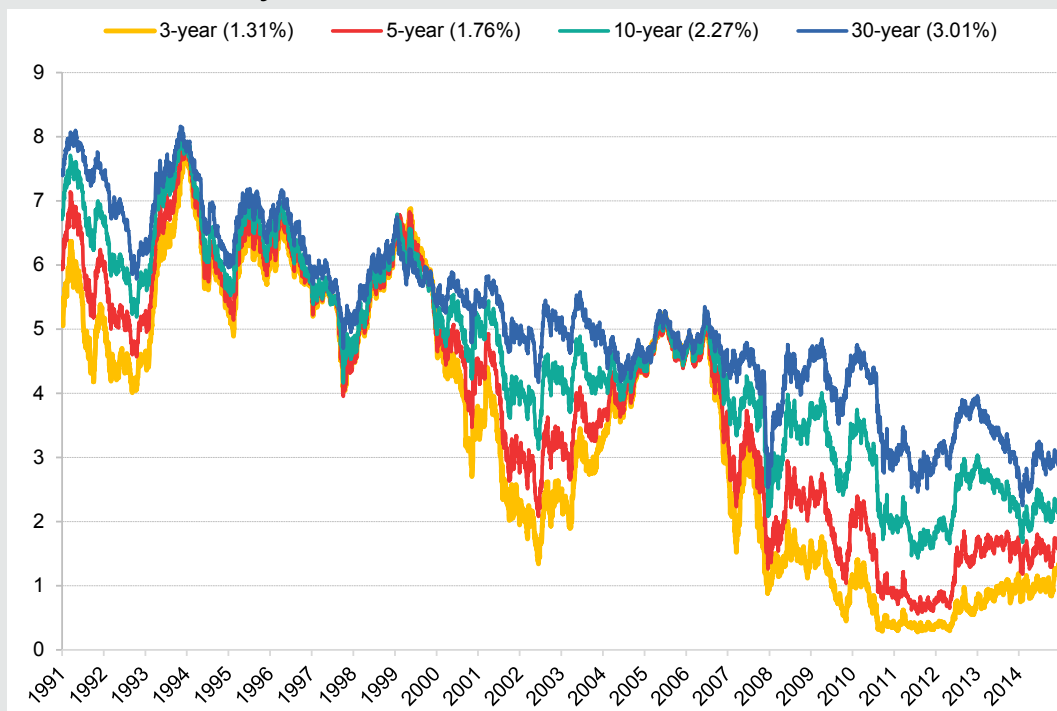


## Yields on Treasury notes and bonds since 1991 (%)



Data compiled Feb. 17, 2016.

Analysis was from Dec. 31, 1991, to Dec. 31, 2015.

Yields are shown for 3-year, 5-year and 10-year Treasury notes, as well as 30-year Treasury bonds.

Source: S&P Global Market Intelligence